

Enterprise EHR Scan Server

Systems Maintenance

Embrace the new world of healthcare

Agenda

- History and Nomenclature
- AE-EHR Scan Components
- Features and Functions
- Server Specifications
- IMPACT.CFG file
- File Shares

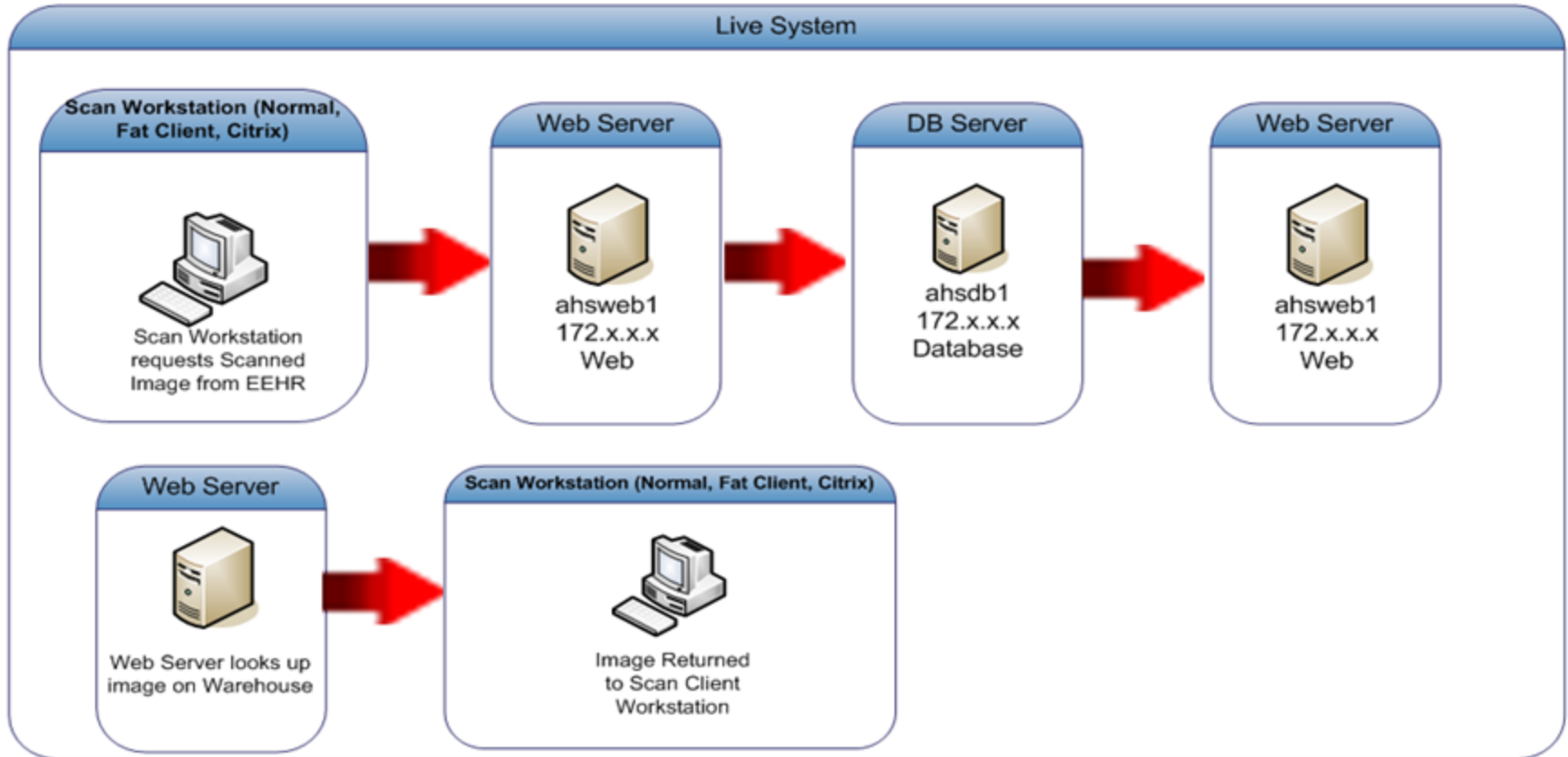
Enterprise EHR Scan Components

- **Scan Server** – Used for creation and filing of images. Can be standalone. Warehouses can exist without access to EEHR
- **Database Server** – Impact database: pointers to Scanned Images
- **Web Server** – ScanWeb virtual directory: requires Service Account to all Warehouses for all users to see scanned images in EEHR
- **Scan Integration** maintains linkage for users between EEHR / Scan
- **Client Components** – 3 ways for Clients to connect

Options for Client Deployment

- **ImpactS.exe** – shortcut to .exe on Scan Server
- **Fat Client** – Scan Server Client Software on Workstation. Configuration files stored locally. May use less bandwidth.
- **Citrix** – Requires CRS (Citrix Remote Scan)
 - Publish Inputs (ImpactS.exe)
 - Publish RDQHost (allows Citrix to store images locally before upload to server)
 - Installation of CRS on Client Workstation

SCAN SERVER TOPOLOGY AND DATA MOVENT: ALLSCRIPTS DOCUMENT IMAGING



Scanned Images within the EHR



The screenshot shows the Allscripts EHR interface in Microsoft Internet Explorer. The browser address bar shows `http://10.10.22.32/ahsweb/`. The interface includes a navigation menu on the left with options like Chart, Tasks, Charges, Patient Lists, Homebase, Reports, and User Mgmt. The main content area displays patient information for "TEST, ALLSCRIPTS" (MRN: 90000, SSN: 123-23-5566, Sex: M, Age: 49 Years, DOB: 09/26/1962, Allergies: Yes). Below this is a "Chart Viewer" section with tabs for Problem, All Results, and Encounter. A list of 288 items is shown, with filters applied. A red arrow points to the following items:

- ROB Male CPX - Ramsay, Theodore; Enc: 02Aug2008 - Non-Appointment - Ramsa
- CAM Letter - Pak, Laura; Enc: 22Jul2008 - Transcription Encounter - Pak, Laura (Ca
- Office Visit (SCAN) - Ramsay, Theodore; Enc: 18Jun2008 - Image Encounter - Ram
- CAM Chart Note - Ramsay, Theodore; Enc: 18Jun2008 - Image Encounter - Ramsa
- CAM Follow-up - Strunk, Brian; Enc: 27Mar2008 - Non-Appointment - Sklar, Joel (C

Features and Functions

- **OCR Capable** – Used to make text searchable
- **ISIS Drivers** – Required for Scanners. Only ISIS drivers: not TWAIN or any other driver. Fujitsu big in scanners
- **Importing Images (IEX)**
 - Imports images into system using Templates; Templates apply filenames to images brought in through IEX
 - Example: MRN_DOB_SomeData = concatenated filename:
 - Allows users to access correct encounter within system

Features and Functions

- Patients, Users Loaded from Enterprise EHR
 - User Setup – Creating user in EEHR automatically creates Scan user
 - Passwords NOT in Synch (as above)
 - File Cabinets: A logical container similar to Warehouse. Rarely used. For items not wanted in EEHR: Supplies, in-house invoices etc.
 - Reiterate Data Path: Web requests chart; DB server locates filename on Warehouse; Web serves located image to EEHR client workstation.
-
- **Error Message**: If image cannot be retrieved then you will see full path and filename of image that caused the error

Server Specifications – 11.1.7

- **11.1.7.x DB Server Requirements:**
 - **OS** – Windows 2003 Server Enterprise x64-bit SP3
 - **SQL Version** – 2005 Enterprise x64 SP3 (9.00.4035.00)

Server Specifications – 11.1.7

- **11.1.7.x Scan Server OS Requirements**
 - **OS** – Windows 2003 Server SP2 (x86)
 - **SQL** – Server 2005 SP3

Server Specifications – 11.2.x

- **11.2.x Database Server OS Requirements:**
 - Windows 2003 Server Enterprise x64-bit SP2
or
 - Windows 2008 Server Enterprise x64-bit
or
 - Windows 2008 Server Enterprise R2 x64-bit

Server Specifications

- **11.2.x Database SQL Server Requirements:**
 - SQL2005 Enterprise x64 Service Pack 3 (9.00.4035.00)
 - Or
 - SQL 2008 Enterprise R2 x64 with SQL Cumulative Update 1 (10.50.1702)

Frequently Asked Questions

- Scan and EEHR passwords start in sync if Scan account is created through EEHR. If Scan or EEHR password changes then passwords will be out of sync
- LDAP does not work – Scan uses its own login info
- Client Upgrade: Workstation user requires Admin rights
- Requires push to Client Workstations for Upgrade

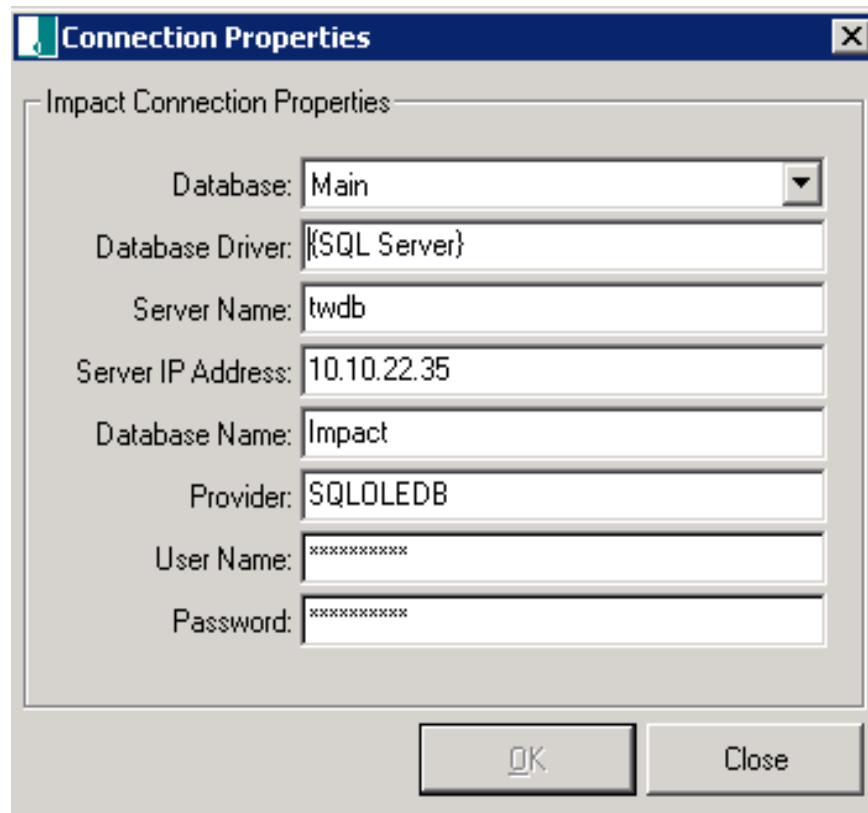
Editing IMPACT.CFG

1. Be careful when editing
2. Note server names and IP
3. Use Conprops.exe for common editing of IMPACT.CFG.
4. Conprops.exe is a GUI for basic IMPACT.CFG editing (servername etc.)
5. Conprops lives on Scan Server in folder with Live IMPACTS.EXE

Editing IMPACT.CFG

```

IMPACT.CFG - Notepad
File Edit Format View Help
[[Global Settings]
DemoMode=FALSE
AllowEditConnectionProperties=0
IEX-DatabaseCount=1
[System Settings]
ReadOnlyMode=FALSE
[1-Data Access]
IMPACT Driver={SQL Server}
IMPACT Database=Impact
IMPACT Provider=SQLOLEDB
IMPACT ServerName=twdb
IMPACT ServerIP=10.10.22.35
IMPACT UserID={qweux|www}
IMPACT Password={qweux|www}
[AICShim]
AppNames=AICShim-Impacts|AICShim-AIC_GIMV
[AICShim-Impacts]
LaunchEXEfileName=Impact.exe
LocalLaunchFolderName=ImpactClient
[AICShim-AIC_GIMV]
LaunchEXEfileName=Gimv.exe
LocalLaunchFolderName=ImpactClient
[1-System Settings]
ForceFAXPhonebook=0
ForceEncounterUsage=0
AutoAssociateEncounterAndDate=0
InactivityTimeout=0
ForceOCRProcessing=0
ForceIPProcessing=0
EditDocumentPropertiesAfterBatchviewProcess=0
HideLockedDocumentsWhenInBatchviewProcessMode=0
MaxLogSize=5
MaxReturnedPatientsonSearch=100
    
```



The dialog box 'Connection Properties' is shown with the following fields:

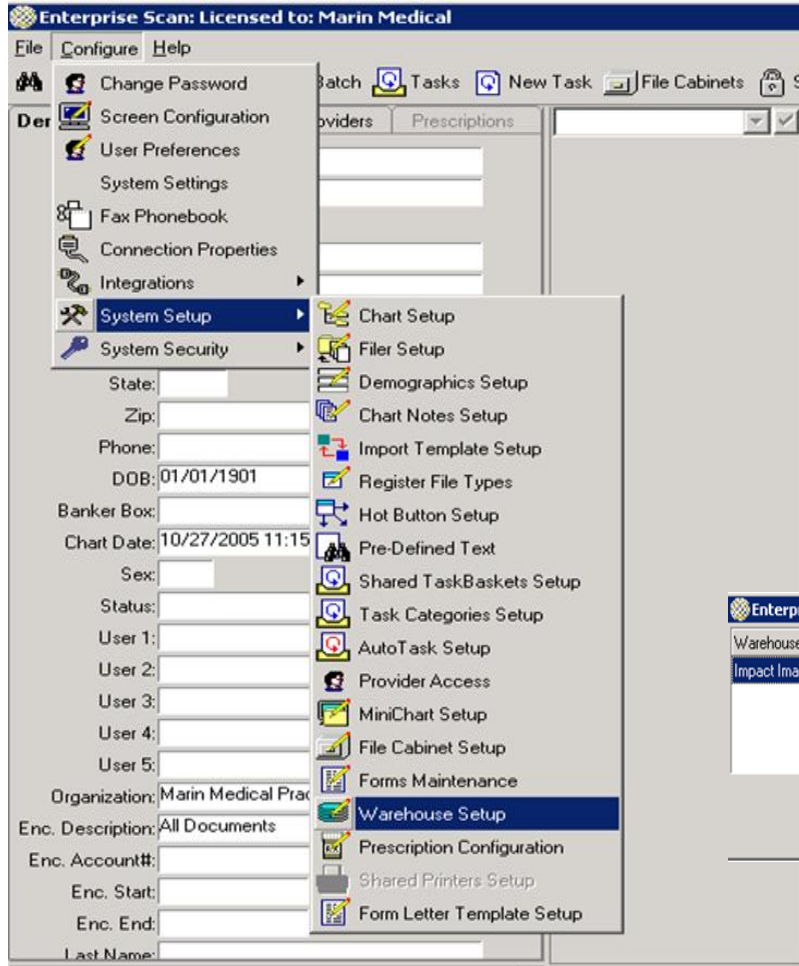
- Database: Main (dropdown menu)
- Database Driver: {SQL Server}
- Server Name: twdb
- Server IP Address: 10.10.22.35
- Database Name: Impact
- Provider: SQLOLEDB
- User Name: xxxxxxxx
- Password: xxxxxxxx

Buttons: OK, Close

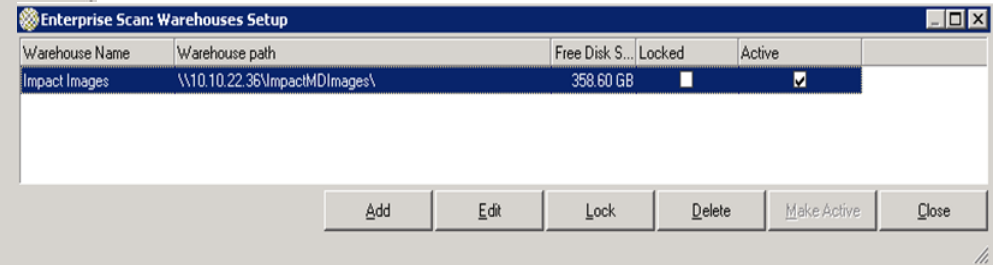
File Shares

- Scanned images (typically .TIFs) live in Scan Warehouses. Can be on any Server
- Can have as many Warehouses as disk space allows
- Only one Warehouse active for writing
- Must be shared wide open; typical names are:
 - \WareHouse01
 - \WareHouse02 etc.

File Shares – Scan Warehouse Setup

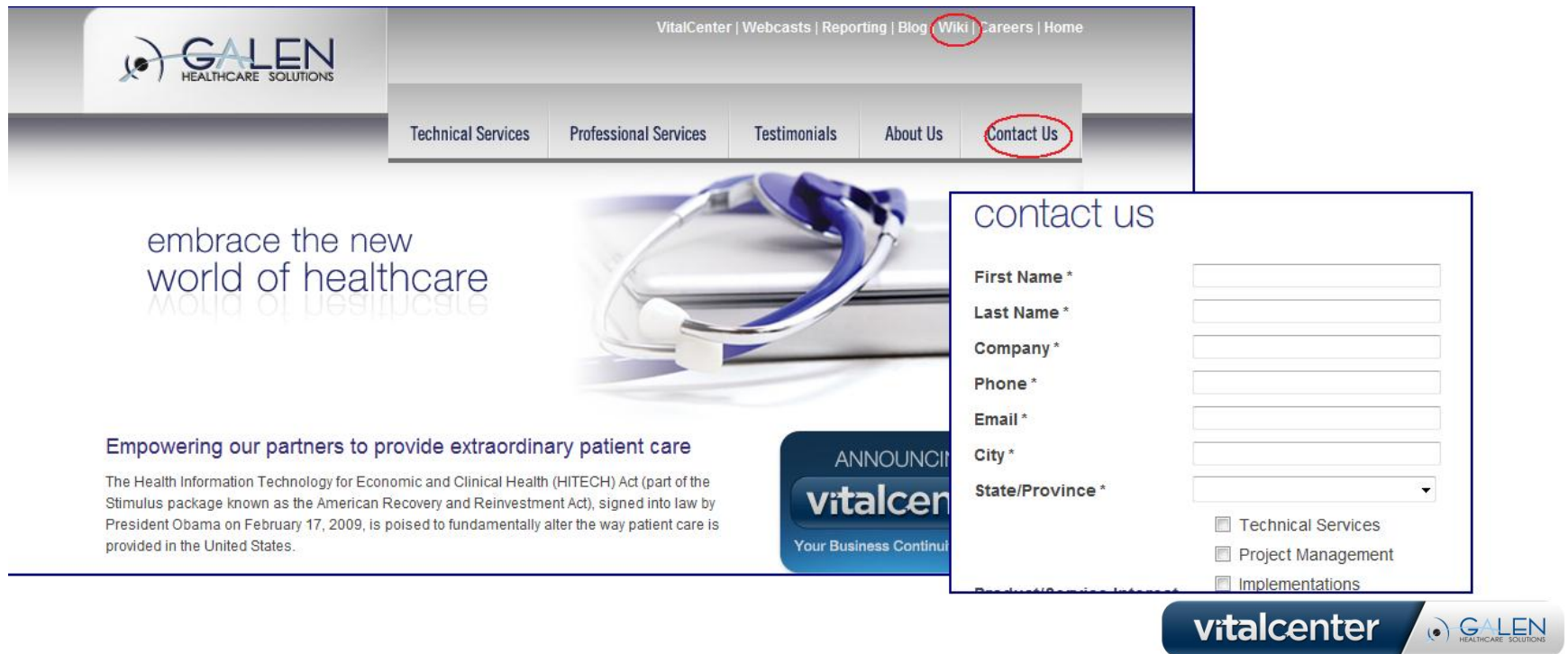


1. Usually only one Warehouse at a time is setup
2. Activating one Warehouse locks the others



Thank you for joining us today.

You can contact us through our website at
www.galenhealthcare.com



The screenshot shows the Galen Healthcare Solutions website. The top navigation bar includes links for VitalCenter, Webcasts, Reporting, Blog, Wiki, Careers, and Home. A secondary navigation bar contains links for Technical Services, Professional Services, Testimonials, About Us, and Contact Us. The main content area features the slogan "embrace the new world of healthcare" and a stethoscope image. A text block describes the HITECH Act. A "vitalcenter" logo is also present. A "contact us" form is overlaid on the right side, containing fields for First Name, Last Name, Company, Phone, Email, City, and State/Province, along with checkboxes for Technical Services, Project Management, and Implementations.

VitalCenter | Webcasts | Reporting | Blog | Wiki | Careers | Home

GALEN HEALTHCARE SOLUTIONS

Technical Services | Professional Services | Testimonials | About Us | Contact Us

embrace the new world of healthcare

Empowering our partners to provide extraordinary patient care

The Health Information Technology for Economic and Clinical Health (HITECH) Act (part of the Stimulus package known as the American Recovery and Reinvestment Act), signed into law by President Obama on February 17, 2009, is poised to fundamentally alter the way patient care is provided in the United States.

ANNOUNCING
vitalcenter
Your Business Continues

contact us

First Name *
Last Name *
Company *
Phone *
Email *
City *
State/Province *

Technical Services
 Project Management
 Implementations

vitalcenter | GALEN HEALTHCARE SOLUTIONS