

AE-EHR Web Servers

Systems Maintenance

April 24, 2012

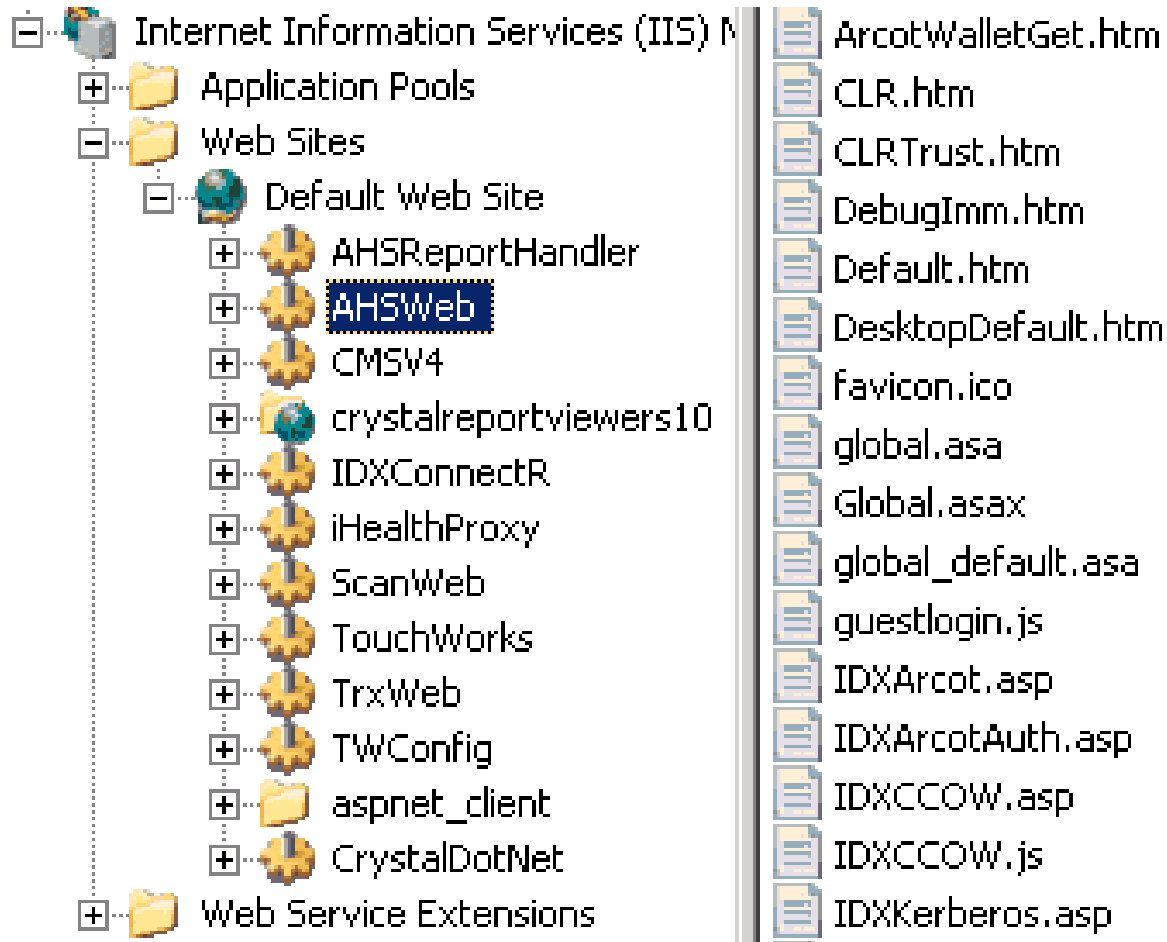
1

vitalcenter

Agenda

- AE-EHR Virtual Directories
- AE-EHR Virtual Object Engine
- VOE Control Panel App Groups
- Web Framework Configuration
- Server Specifications
- Web Services
- Data Access Paths
- Systems Maintenance

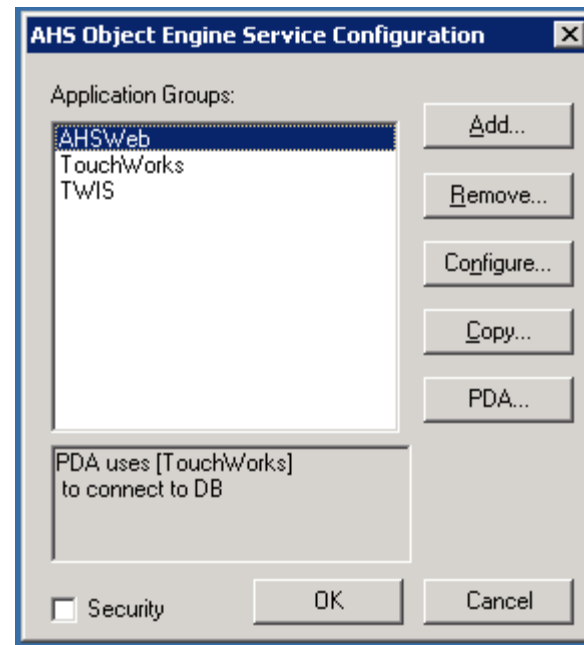
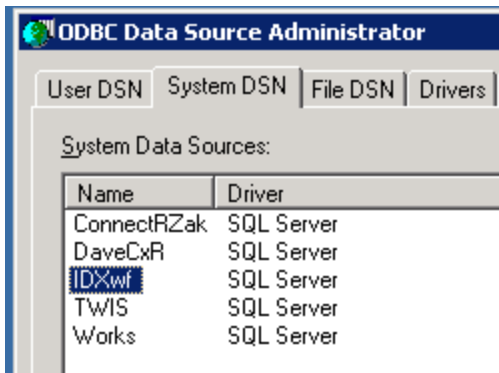
AE-EHR Virtual Directories



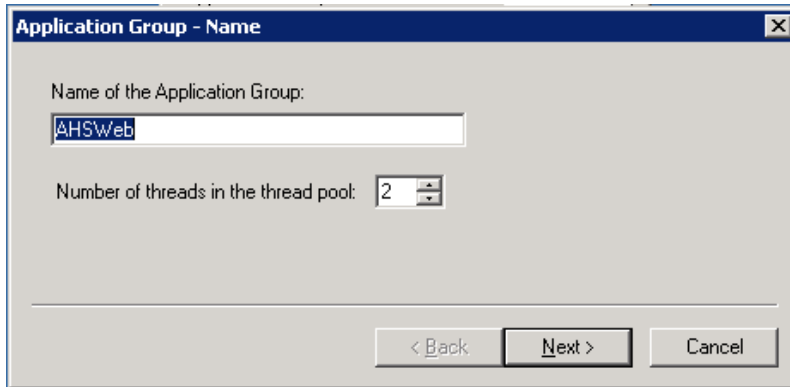
AE-EHR Virtual Directories

- AHSWeb - Framework
- Touchworks - AE-EHR Program Files
- TrxWeb - Dictate and PDA functions
- ScanWeb - Scan Image Access
- CMSV4 - VOE DB Communication
- AHSReportHandler - AE-EHR Reports

AE-EHR Virtual Object Engine



AE-EHR Virtual Object Engine

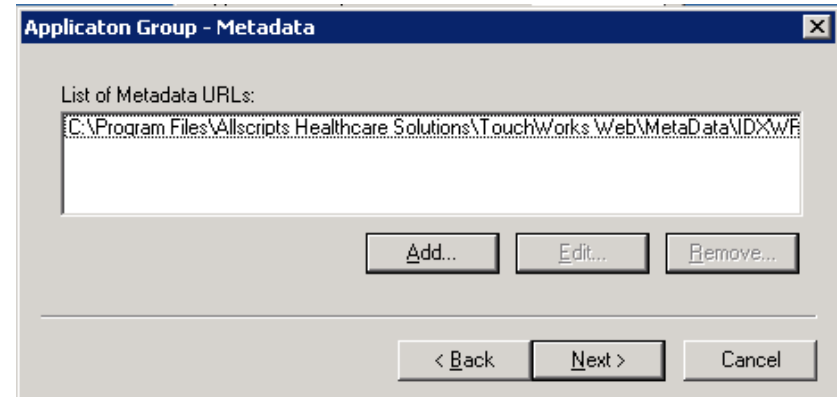


Application Group - Name

Name of the Application Group:

Number of threads in the thread pool:

< Back Next > Cancel

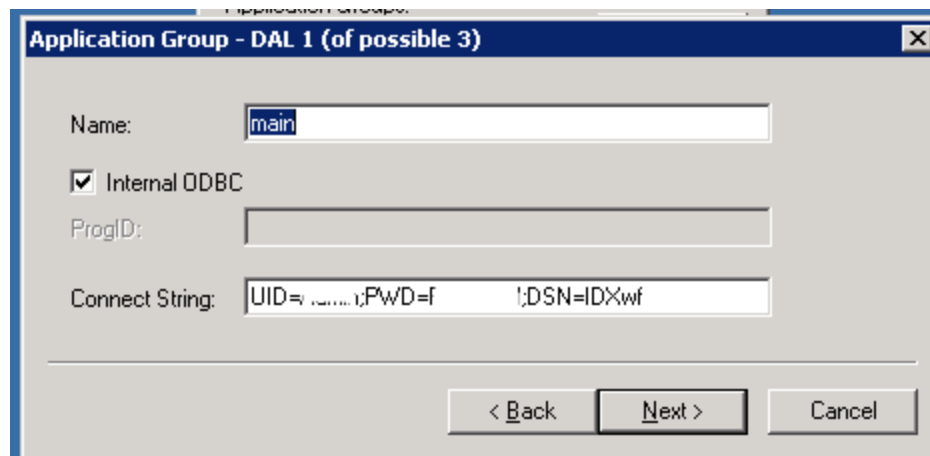


Application Group - Metadata

List of Metadata URLs:

Add... Edit... Remove...

< Back Next > Cancel



Application Group - DAL 1 (of possible 3)

Name:

Internal ODBC

ProgID:

Connect String:

< Back Next > Cancel

AE-EHR Virtual Object Engine

- Allscripts Virtual Object Engine is the key communication mechanism between the web and database servers
- Leverages system level DSN's setup using ODBC

VOE Control Panel App Groups

- **AHSWeb:**
 - IDXwf Database
 - IDXWF ODBC
- **Touchworks:**
 - Works Database
 - Works ODBC
- **TWIS (Document Imaging):**
 - Impact Database
 - TWIS ODBC

Web Framework Configuration

- **Database Server Connection Info:**
 - Init.xml
 - <Db>: Confirm Server Name is Accurate
 - <Usr>: Confirm SQL Login
 - <Pwd>: Password is Encrypted during install

Server Specifications

- **11.2**
 - Windows Server 2003 SP2 (x86 only)
or Windows Server 2008 (x86 only)
 - Internet Explorer 6.0 SP3, 7.0, 8.0
- **11.4 DRAFT**
 - Adds Windows Server 2008 R2 x64 support
 - Internet Explorer 7.0, 8.0, 9.0

Server Specifications

- 2 server class processor cores
- 2 GB RAM (at least)
- (2) 36 GB disk drives (10,000 rpm) configured as 1 logical RAID 1 device
 - *Larger drive sizes may be substituted*
- *Production and test web servers can be virtualized*
- *GE Framework version 5.02 is required when using Internet Explorer 8, 5.03 required for IE 9*

Libraries and Pre-Requisites

- **11.2**
 - IIS
 - Microsoft .NET Framework 2.0 SP2 and 3.5 SP1
- **11.4 DRAFT**
 - IIS
 - Microsoft .NET Framework 4.0
 - Microsoft Visual C++ 2010 redistributable

Web Services

- **WWW Service:**
 - Application service for IIS Servers
- **AHSVOEService**
 - AE-EHR Data Access Service
- **Medcin Service**
 - Retrieval of Medcin Templates
- **Microsoft .NET 2.0, 3.5, 4.0**
 - ASP .NET for New v11 Functionality

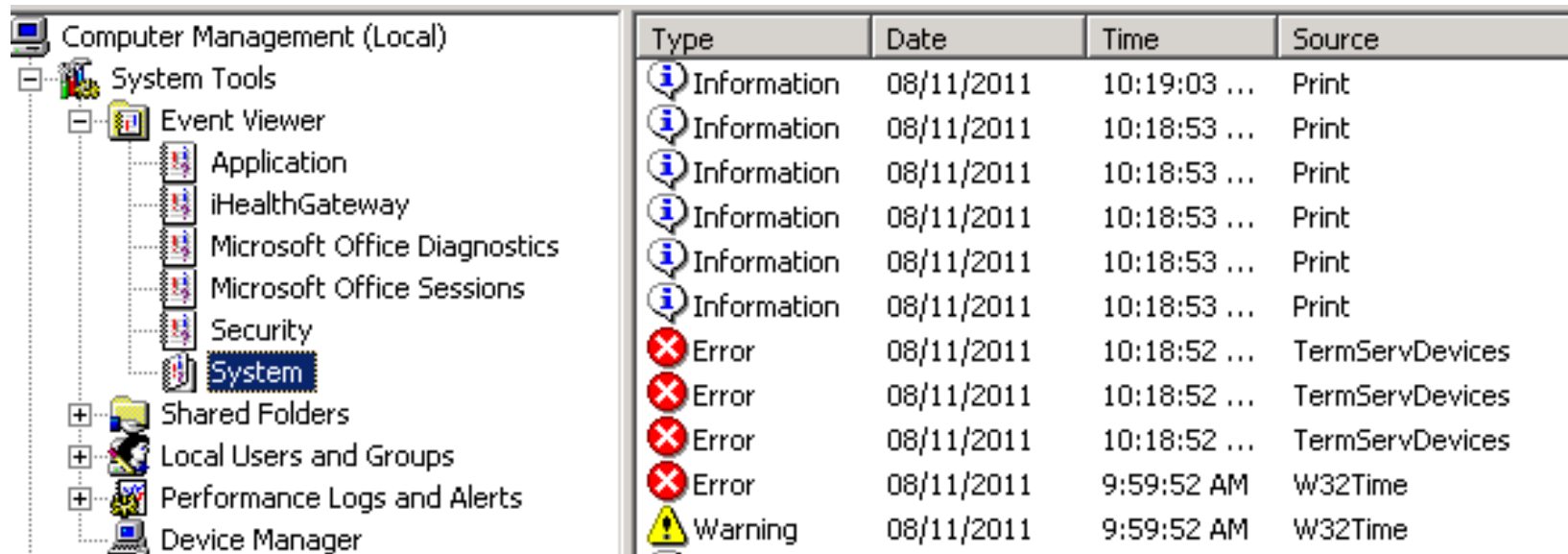
Data Access Paths

- **Database**
 - VOE Connections
- **Document Imaging/Transcription**
 - Windows File Share
- **Printing**
 - Preview handled locally
 - Hard copies sent through queue in database, pulled by spooler

System Maintenance

- Event Logs
- Performance Baseline
- Plan for Future Growth
- Bandwidth/Capacity
- Change Control
- Test vs. Live System - Apply in Test First!

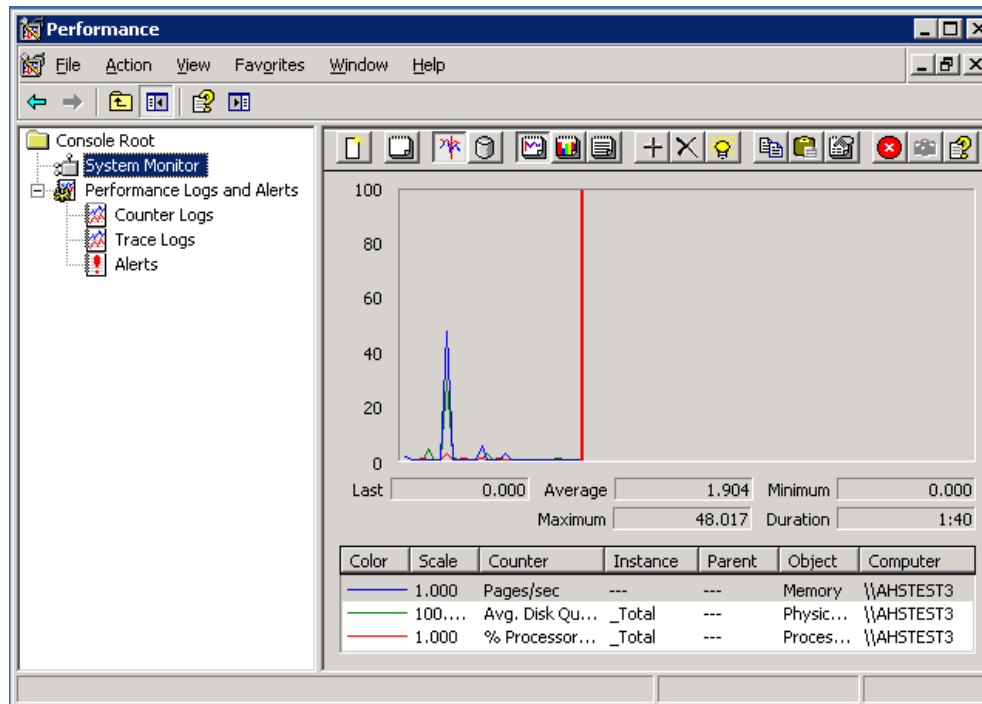
Event Logs - Regular Review



Type	Date	Time	Source
Information	08/11/2011	10:19:03 ...	Print
Information	08/11/2011	10:18:53 ...	Print
Information	08/11/2011	10:18:53 ...	Print
Information	08/11/2011	10:18:53 ...	Print
Information	08/11/2011	10:18:53 ...	Print
Information	08/11/2011	10:18:53 ...	Print
Error	08/11/2011	10:18:52 ...	TermServDevices
Error	08/11/2011	10:18:52 ...	TermServDevices
Error	08/11/2011	10:18:52 ...	TermServDevices
Error	08/11/2011	9:59:52 AM	W32Time
Warning	08/11/2011	9:59:52 AM	W32Time

Performance Baseline

- Create snapshot of normal metric levels



Plan for Future Growth

- One web server for every 200 connections
- Validate load balancer configuration before moving into live
- Virtualization is supported for web servers
- Cloning of VMs has been mostly successful
 - Often have to revisit service account passwords in Virtual Directories where it is used.

Bandwidth/Capacity

- From end users to Web Server(s)
- Batch scanning can be a major contender for available bandwidth
- Recommended BW Requirements per site (with Scan and/or dictate)
 - Base: 1024 kbps
 - Plus per user: 40 kbps

Change Control

- Keep things Stable
- Established Process, or your own?
- Use your ticketing system

Test vs. Live System

- Apply changes in Test First!
- Get real users to validate functionality after change before proceeding in Live.

Agenda - Review

- AE-EHR Virtual Directories
- AE-EHR Virtual Object Engine
- VOE Control Panel App Groups
- Web Framework Configuration
- Server Specifications
- Web Services
- Data Access Paths
- Systems Maintenance

Questions?