

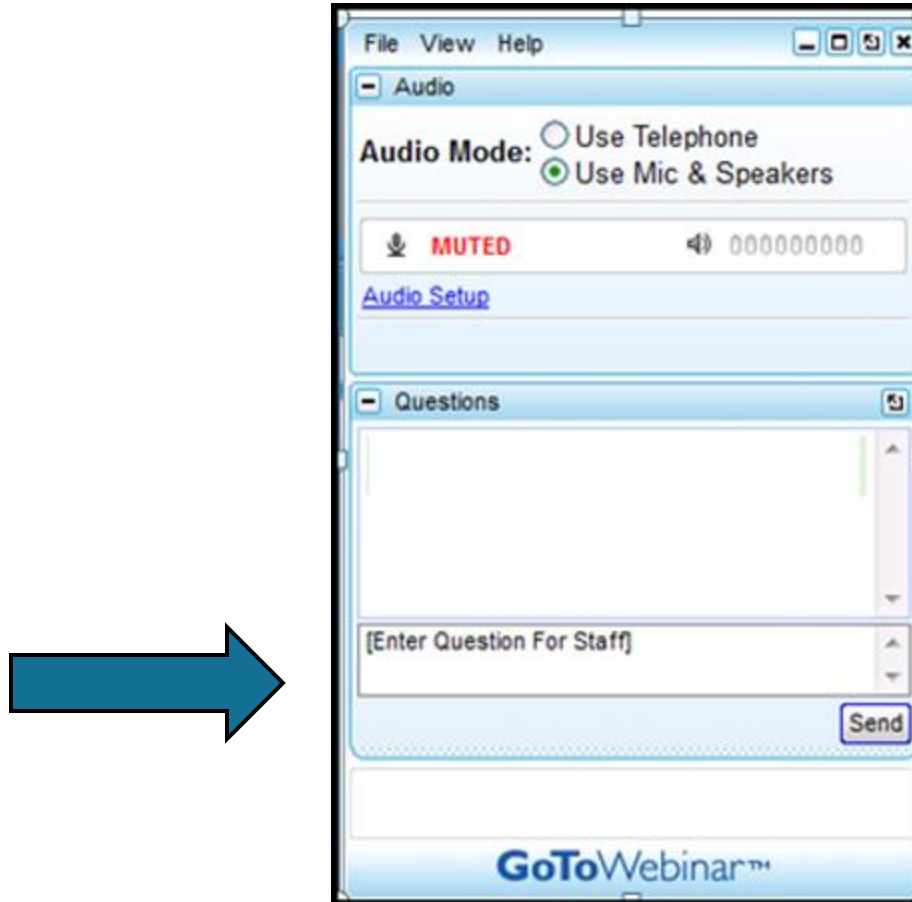
Allscripts Enterprise EHR Medication

Medication Outline



- **Medi-Span**
- **Delta Process**
- **Formulary & DUR Checking**
- **Orderable Item Dictionary**
- **Medication Order Details**
- **Clinical Scenarios/Medication Issues**
- **Considerations when working with Meds**

Submit questions during the webcast



Medi-Span



Medi-Span

Not to be confused with



Medi-Span

Not to be confused with

Medcin !



Medi-Span

- ✓ Medications
- ✓ Dose checking
- ✓ Drug indications
- ✓ Drug pricing history

...and much more.



Medcin

- Medical concepts
- Symptoms
- Physical findings
- Diagnosis codes



Medi-Span®



Who/What is Medi-Span?

- ~ Part of Wolters Kluwer Health Clinical Solutions.
- ~ More than 30 years of development.
- ~ A collection/offering of drug databases and files available in a variety of formats.
- ~ A physician/clinical/coder/pharmaceutical advisory group which informs on drug dosing, interactions, adverse drug effects, and others.

Medi-Span Databases & Files

- **Medi-Span Electronic Drug File**
- **Adverse Drug Effects Database**
- **Drug Dosing & Administration Database**
- **Drug Indications Database**
- **Drug Lab Conflict Database**
- **Drug Therapy Monitoring System**
- **Duplicate Therapy Database**
- **Standard Drug Identifiers Database**



Medi-Span Databases & Files

- **Medi-Span Electronic Drug File**
- **Adverse Drug Effects Database**
- **Drug Dosing & Administration Database**
- **Drug Indications Database**
- **Drug Lab Conflict Database**
- **Drug Therapy Monitoring System**
- **Duplicate Therapy Database**
- **Standard Drug Identifiers Database**



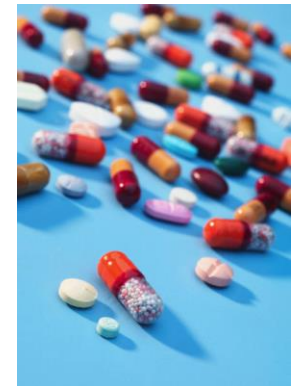
And many, many more...

Medi-Span Electronic Drug File

A comprehensive, codified drug dictionary, drug vocabulary and drug pricing for prescription drugs and medication-based over-the-counter products in the United States.

Features:

- ~ **Product names**
- ~ **Dose form**
- ~ **Route of administration**
- ~ **Strength**
- ~ **Proprietary drug identifiers: GPI, DDID, GPPC**
- ~ **Pricing files**
- ~ **Ingredients**

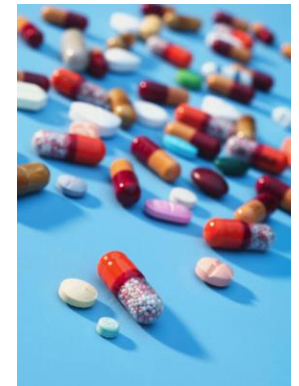


Drug Therapy Monitoring System

A comprehensive, current drug interaction and drug allergy screening database.

Features:

- ~ **Drug – drug, drug-food, drug-alcohol interaction screening.**
- ~ **Onset information**
- ~ **Severity information**
- ~ **Management code**
- ~ **Route specificity**
- ~ **Prior Adverse Reaction (PAR)**
- ~ **Text monographs**



Drug Inactive Date File

A list of National Drug Codes and their inactive dates.

Features:

- ~ **ALL inactive NDC's UPC's & HRI's since the early 80's.**



Medi-Span updates

New Product Submission Form

Please complete a separate form for each new product submission and e-mail completed form and supporting documents to: mfgdata@wolterskluwer.com

Please submit the following supporting documents for each new product:

- Package Insert
- Package Label
- FDA Approval Letter (NDA, ANDA, BLA)
- Product Image or Product Example (See page two for image guidelines)

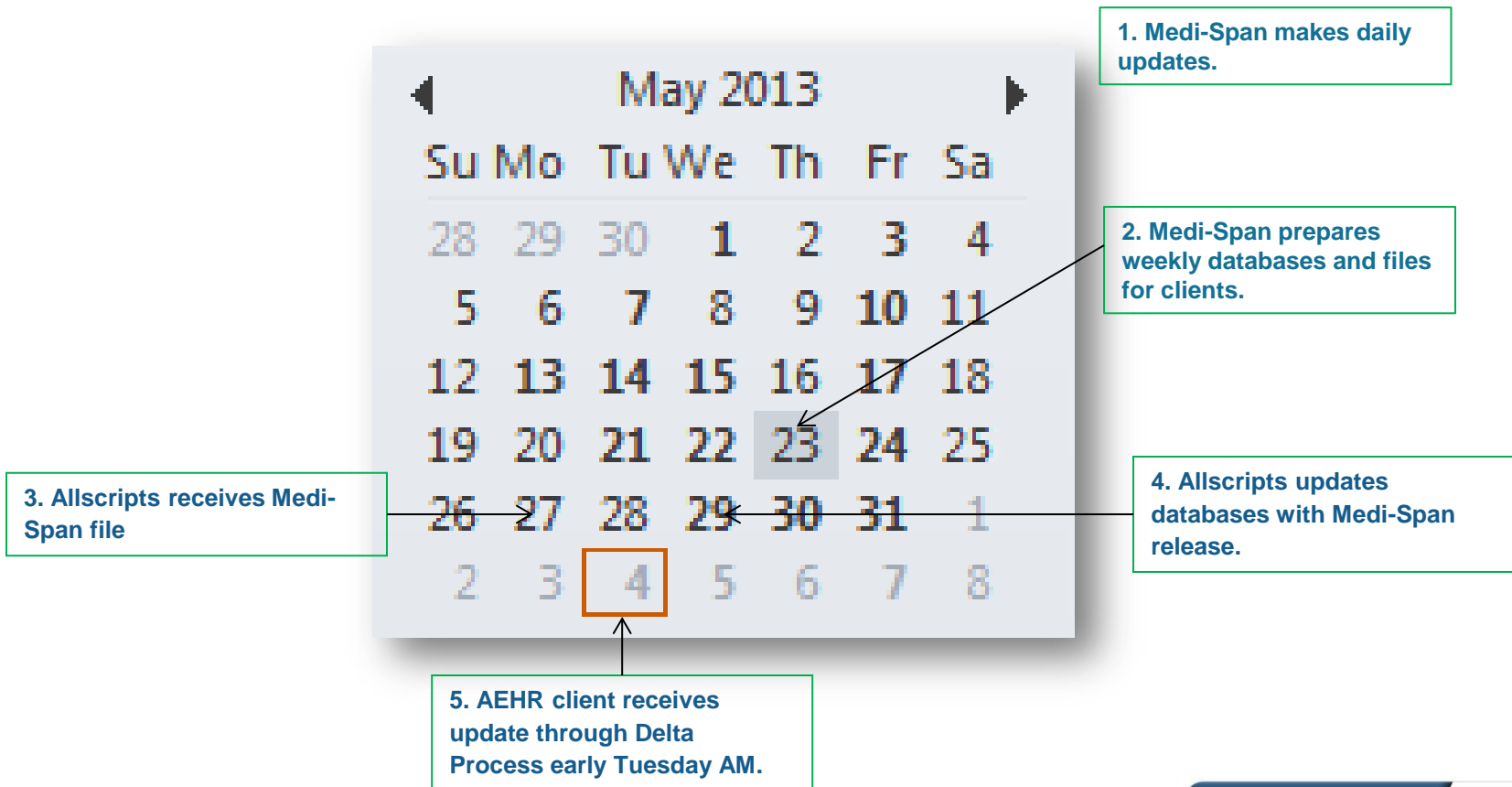
Please note: All products must have at least one identifier (NDC, UPC or HRI) and one price type (WAC, DP or SWP.)

NDC Number	
InnerPack NDC*** (if applicable)	
HRI Number	
UPC Number	
Reference NDC (if applicable)	
Product Name	
Rx or OTC	
Package Size (ml, gm, each)	
Dosage Form	
Wholesale Acquisition Cost (WAC)	
Direct Price (DP)	
Manufacturer's Suggested Wholesale Price (SWP)	
Effective Date (Pricing)	
Active Ingredients & Strengths	
Descriptive Information Imprint side 1/Imprint side 2 Color/Shape Score marks/Coating Flavor/Clarity	
Labeler/Manufacturer Name	
NDA/ANDA/BLA Number	
Contact Name, Email, and Telephone	

***If the product package has an inner NDC different from the outer NDC, please provide the NDC number for both the inner package and the outer package.



Update Cycle



Drug Utilization Review (DUR)

Medicaid.gov
Keeping America Healthy

- 1. Prospective DUR – first phase**
- 2. Retrospective DUR – second phase**

Drug Utilization Review (DUR)

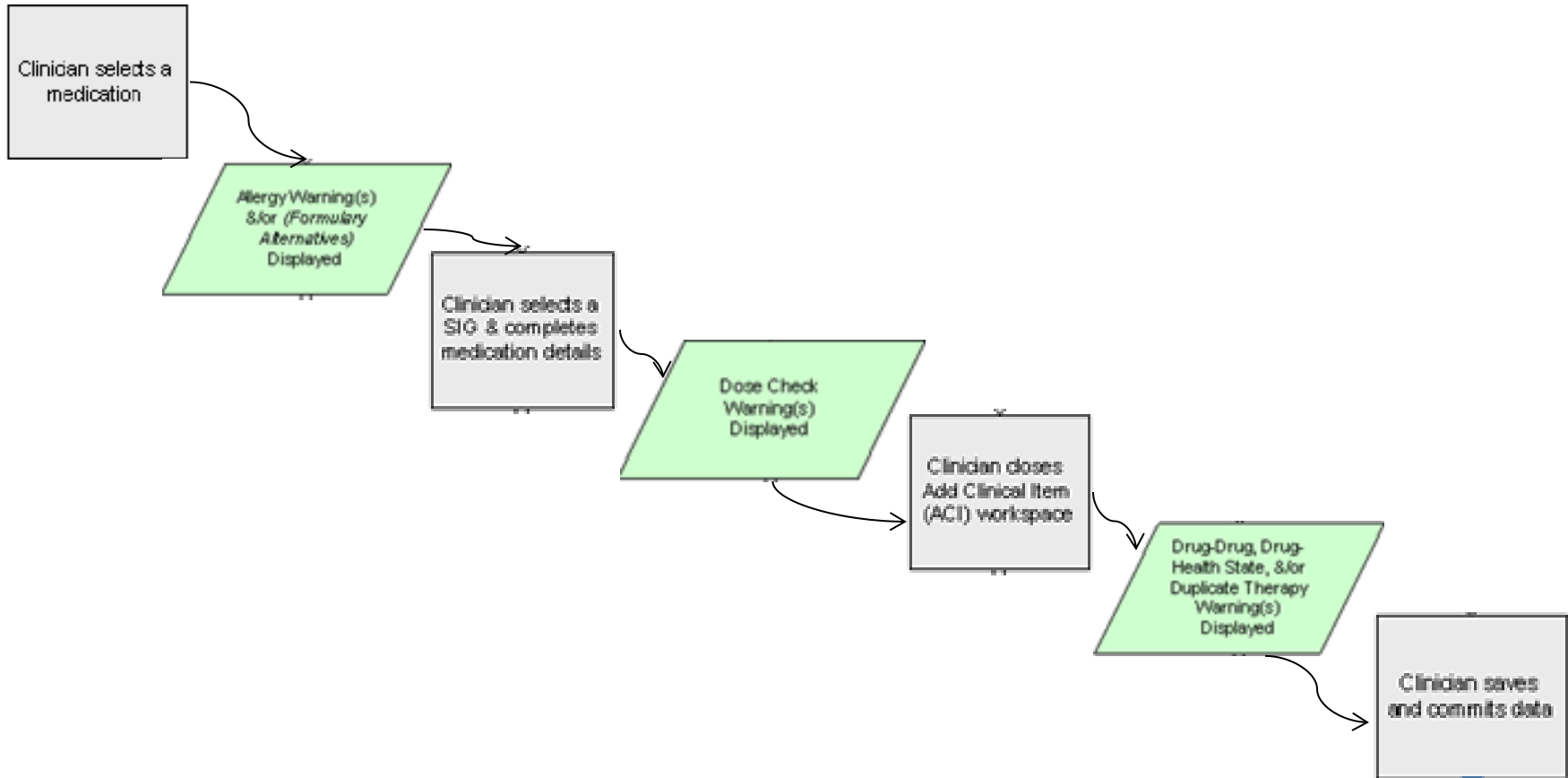
TOOLS TO SUPPORT DRUG UTILIZATION REVIEW:

DATABASES





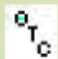

[Adverse Drug Effects Database™](#)
[Drug Dosing & Administration Database™](#)
[Drug Indications Database™](#)
[Drug Lab Conflict Database™](#)
[Drug Therapy Monitoring System™ \(DTMS\) v2.1/](#)
[DTMS Consumer Monographs](#)
[Duplicate Therapy Database™](#)
[Integrated A to Z Drug Facts™ Module](#)
[Master Parameters Database™](#)
[Medi-Span Electronic Drug File™ \(MED-File\)](#)
[Medical Conditions Master Database™](#)
[Medication Order Management Database™ \(MOMD\)](#)
[Parameters to Monitor Database™](#)
[Precautions Database™](#)
[Rx Norm Cross-Reference File](#)
[Standard Drug Identifiers Database](#)
[Supplemental Names File](#)

Medi-Span®

DUR Alerts in AEHR



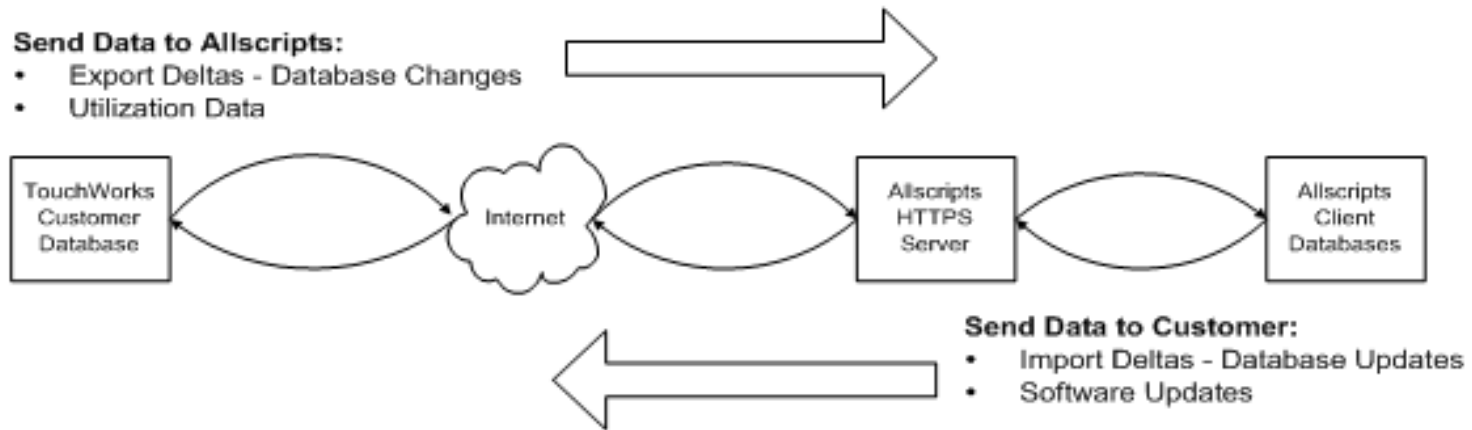
Formulary

	A green smiley face indicates the medication is on-formulary and preferred by the PBM.
	A yellow straight face indicates the medication is on-formulary and acceptable but less preferred by the PBM; a higher co-pay may be required.
	A red frowny or sad face indicates the medication is off-formulary and not preferred by the PBM.
	PA indicates prior authorization for the medication is required by the PBM. Note: PA is really a Coverage condition, not a formulary status, but some formulary sources continue to include PA as part of formulary.
	OTC indicates an over-the-counter medication, which is not covered by the PBM.
	Non-Reimbursable indicates that the medication will not be reimbursed by the patient's PBM. (This icon is a dollar sign with a slash.)

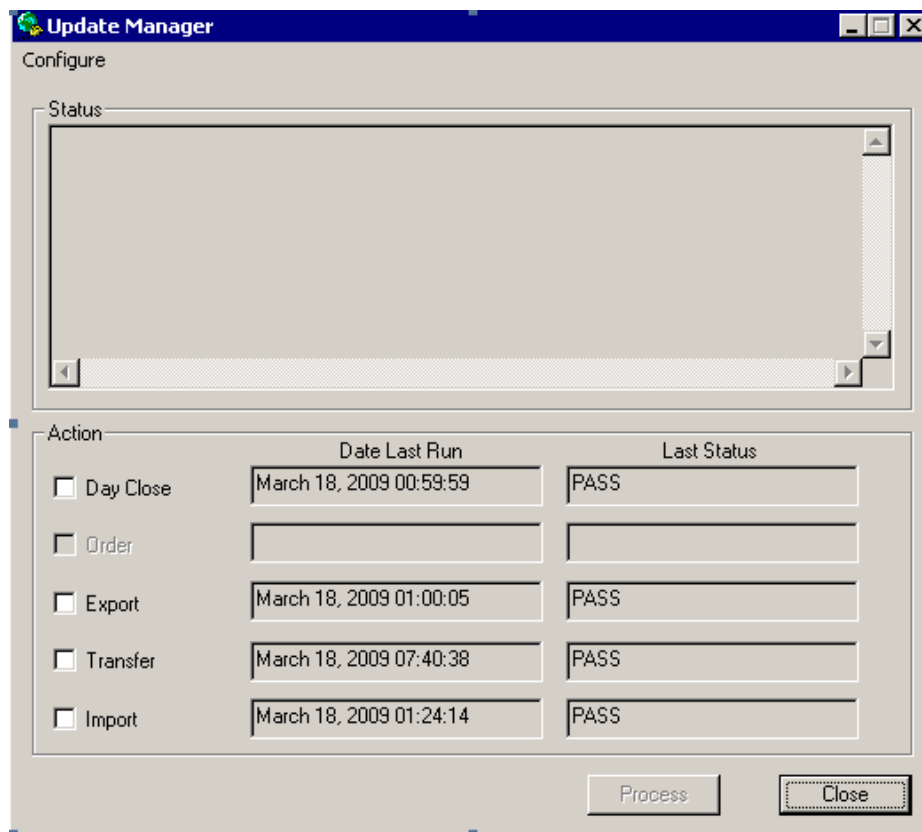
Allscripts Delta Process



Allscripts Delta Process



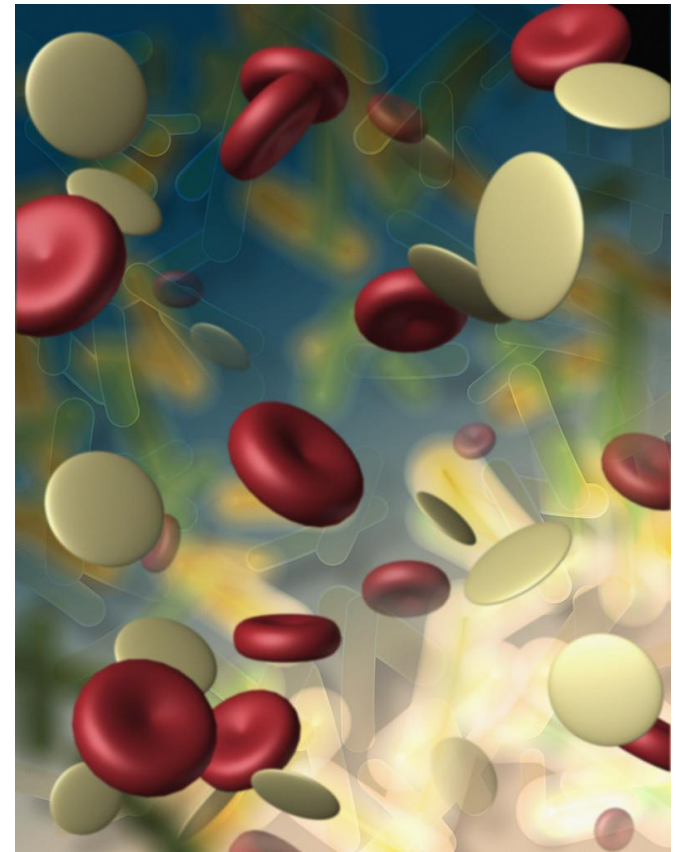
Delta Monitoring





Medication Order Details

- ~ *Clinical Desktop Views*
- ~ *ACI - Favorites*
- ~ *Medication Order Details*
- ~ *Medication History*



Clinical Scenarios:

- ✓ Using Annotations
- ✓ Reaction History
- ✓ User defined meds



Considerations

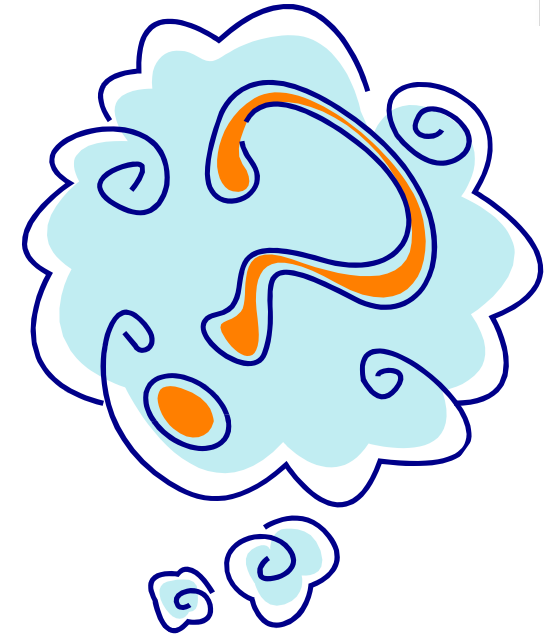
- **Medi-Span updates**
- **Med Flowsheets**

Medication Outline



- **Medi-Span – Delta Process**
- **Formulary & DUR checking**
- **Orderable Item Dictionary**
- **Medication Order Details**
- **Clinical Scenarios/Medication Issues**
- **Considerations when working with Meds**

Medication Outline



- **Medi-Span – Delta Process**
- **Formulary & DUR checking**
- **Orderable Item Dictionary**
- **Medication Order Details**
- **Clinical Scenarios/Medication Issues**
- **Considerations when working with Meds**

<http://wiki.galenhealthcare.com/Webcasts>

VitalCenter™


Your Anytime Business Continuity Solution

VitalCenter is a client-server application that delivers patient charts to the point-of-care to ensure business continuity. This Patent Pending technology enables physicians to access electronic copies of patient charts when the EHR is not available. From hardware failures to network outages and even scheduled maintenance, VitalCenter helps health care groups handle any downtime event. And, by offering instant access to records, VitalCenter can significantly increase efficiency during normal business circumstances as well. That's why multiple medical groups around the country rely on VitalCenter to keep them up and running with maximum efficiency.

For more information, visit vitalcenter.galenhealthcare.com



<http://wiki.galenhealthcare.com/Webcasts>



Slides from this and previously recorded Galen webcasts can be found here!

VitalCenter™

Your Anytime Business Continuity Solution

VitalCenter is a client-server application that delivers patient charts to the point-of-care to ensure business continuity. This Patent Pending technology enables physicians to access electronic copies of patient charts when the EHR is not available. From hardware failures to network outages and even scheduled maintenance, VitalCenter helps health care groups handle any downtime event. And, by offering instant access to records, VitalCenter can significantly increase efficiency during normal business circumstances as well. That's why multiple medical groups around the country rely on VitalCenter to keep them up and running with maximum efficiency.

For more information, visit vitalcenter.galenhealthcare.com

